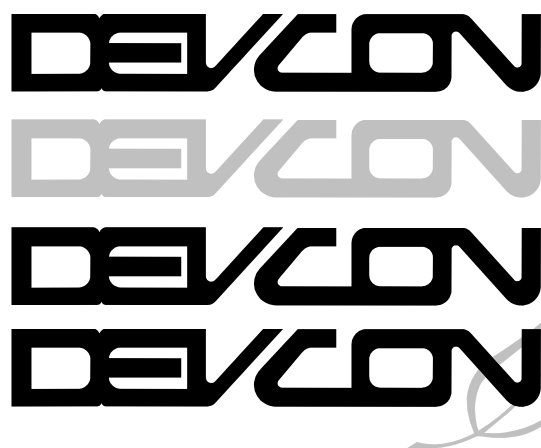


NEW 2-STORY
PHILANTHROPIC
BUILDING

400 BENITO STREET HOLLISTER, CALIFORNIA



CONSTRUCTION
INCORPORATED

690 Gibraltar Drive
Milpitas, California 95035
(408)942-8200 Lic. #399163

GENERAL NOTES:
CONTRACTOR SHALL FIELD VERIFY ALL JOB CONDITIONS AND DIMENSIONS. VARIATIONS THEREOF FROM THE DRAWINGS MUST BE REPORTED TO THE ARCHITECT. DETAILS INDICATED ON THE DRAWINGS ARE REPRESENTATIVE AND TYPICAL. ALL ATTACHMENTS AND CONNECTIONS SHALL CONFORM TO BEST PRACTICE AND SHALL BE THE CONTRACTOR'S RESPONSIBILITY.

THIS DRAWING EMBODIES IDEAS, DESIGNS, ARRANGEMENTS, PLANS AND SPECIFICATIONS WHICH ARE PROPRIETARY TO DEVCON CONSTRUCTION INC. AND WHICH WERE DESIGNED, CREATED, EVOLVED AND DEVELOPED FOR USE SOLELY IN CONNECTION WITH THE SPECIFIED PROJECT. NO TRANSFER OF ANY RIGHTS THERE TO IS INTENDED OR EFFECTED BY DELIVERY HEREOF, AND EXCEPT UPON THE WRITTEN PERMISSION OF DEVCON CONSTRUCTION INC., THE DRAWING IS NOT TO BE DISCLOSED TO OTHERS, REPRODUCED OR COPIED IN WHOLE OR IN PART, OR USED IN THE FABRICATION OR CONSTRUCTION OF BUILDINGS, STRUCTURES, FOUNDATIONS, OR ANY PORTIONS THEREOF, FOR OTHER THAN THE SPECIFIED PROJECT. © DEVCON CONSTRUCTION, INC.

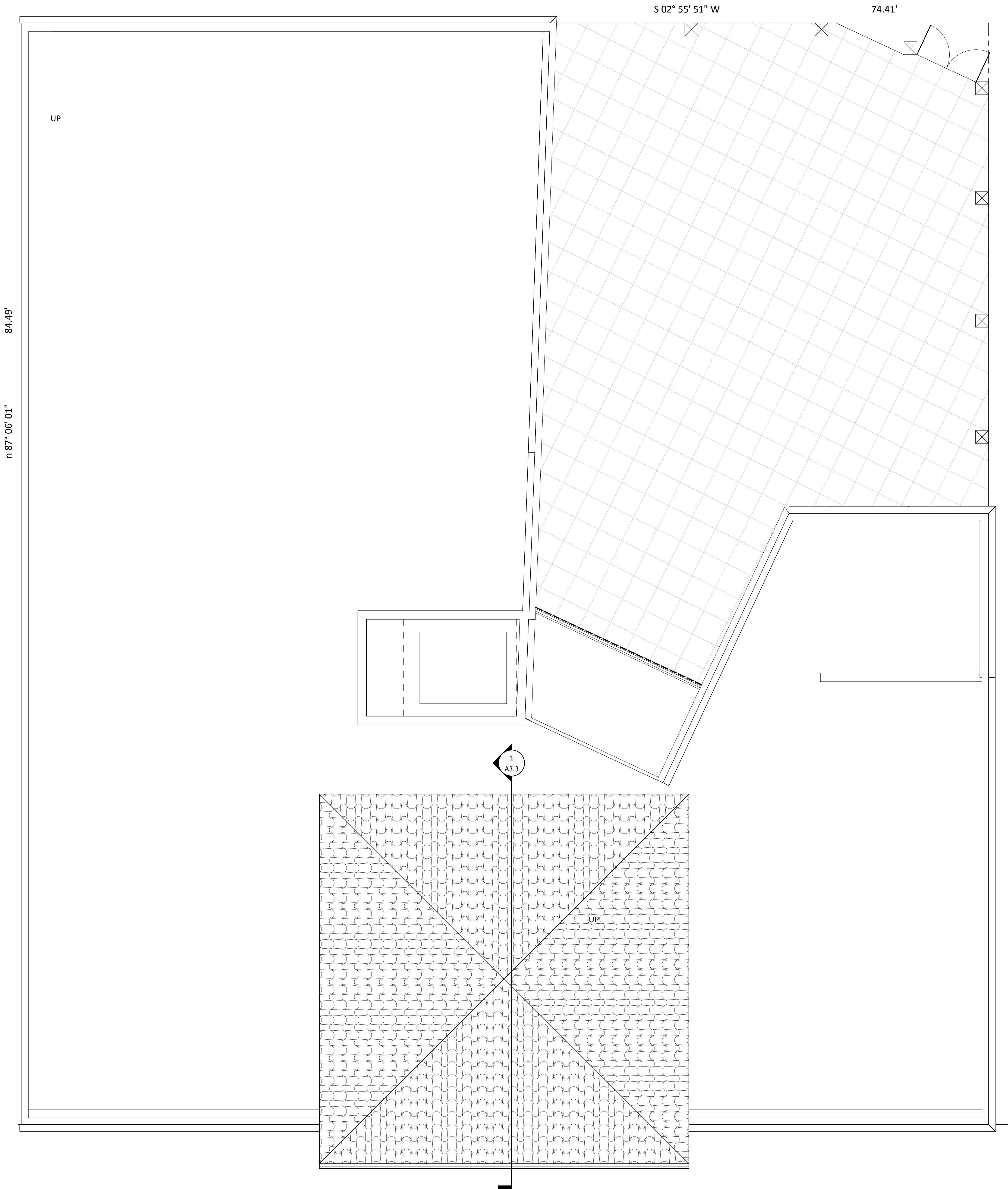
REVISIONS

NO.	DATE	DESCRIPTION	BY

SITE PLAN

JOB NO. 67.755
DATE: 05/15/17
DRAWN:E.V.
CHECKED: GIBA/SLY
ISSUE: PRELIMINARY

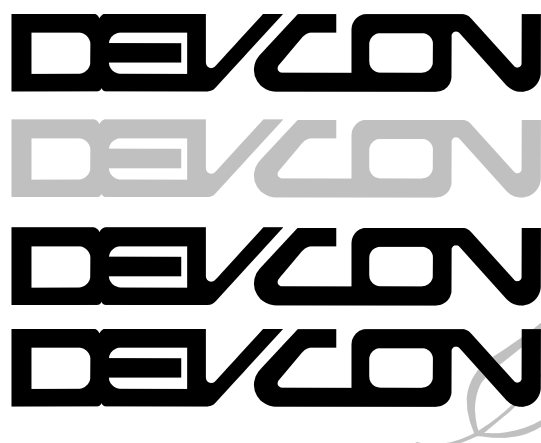
SHEET NO.
A1.0
OF SHEETS



1 SITE PLAN
1/4" = 1'-0"

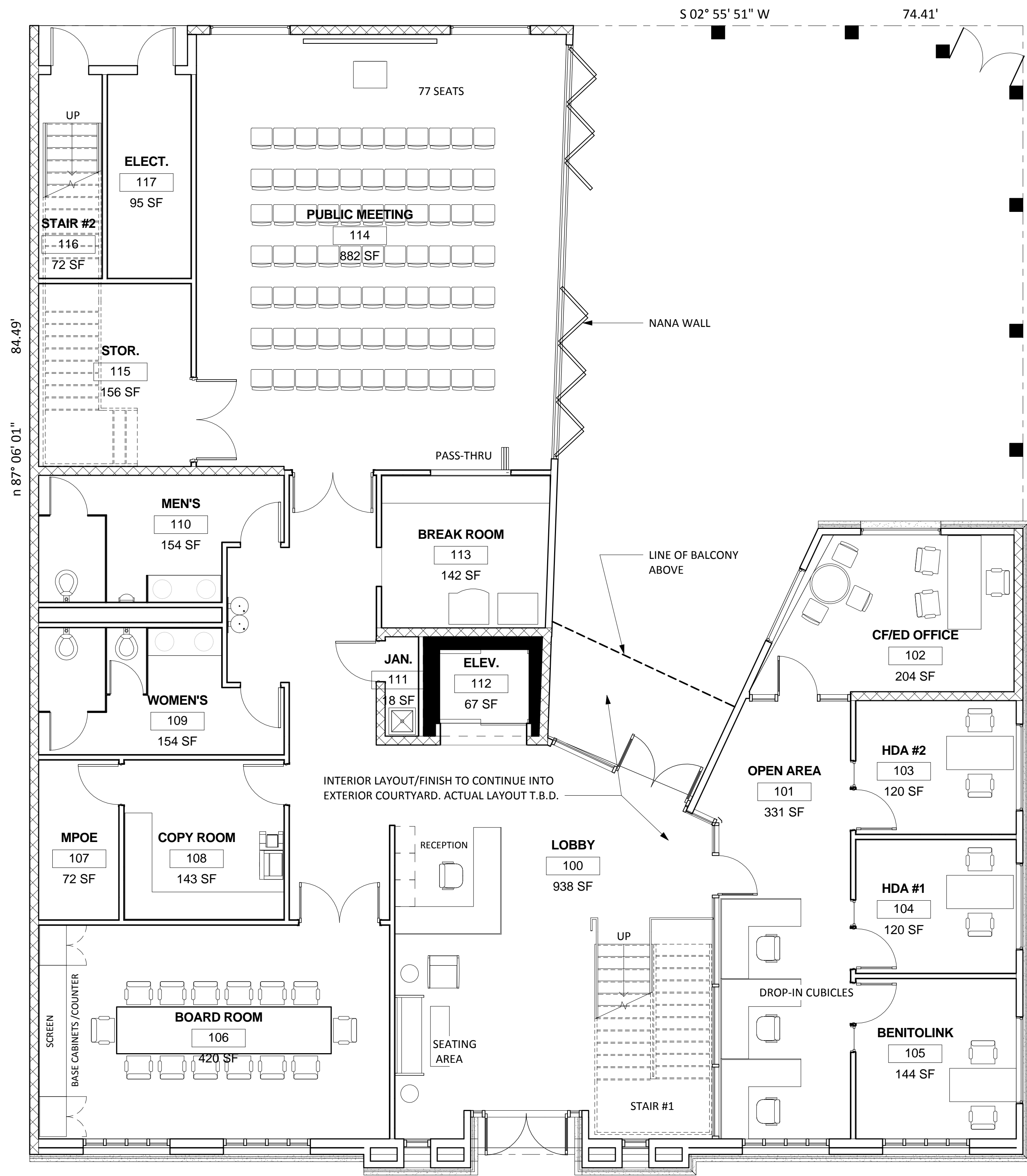
NEW 2-STORY
PHILANTHROPIC
BUILDING

400 BENITO STREET HOLLISTER, CALIFORNIA



CONSTRUCTION
INCORPORATED

690 Gibraltar Drive
Milpitas, California 95035
(408)942-8200 Lic. #399163



1 FIRST FLOOR
3/16" = 1'-0"

4,670 SF



GENERAL NOTES:
CONTRACTOR SHALL FIELD VERIFY ALL JOB CONDITIONS AND DIMENSIONS. VARIATIONS THEREOF FROM THE DRAWINGS MUST BE REPORTED TO THE ARCHITECT. DETAILS INDICATED ON THE DRAWINGS ARE REPRESENTATIVE AND TYPICAL. ALL ATTACHMENTS AND CONNECTIONS SHALL CONFORM TO BEST PRACTICE AND SHALL BE THE CONTRACTOR'S RESPONSIBILITY.

THIS DRAWING EMBODIES IDEAS, DESIGNS, ARRANGEMENTS, PLANS AND SPECIFICATIONS WHICH ARE PROPRIETARY TO DEVCON CONSTRUCTION INC. AND WHICH WERE DESIGNED, CREATED, EVOLVED AND DEVELOPED FOR USE SOLELY IN CONNECTION WITH THE SPECIFIED PROJECT. NO TRANSFER OF ANY RIGHTS THERETO IS INTENDED OR EFFECTED BY DELIVERY HEREOF, AND EXCEPT UPON THE WRITTEN PERMISSION OF DEVCON CONSTRUCTION INC., THE DRAWING IS NOT TO BE DISCLOSED TO OTHERS, REPRODUCED OR COPIED IN WHOLE OR IN PART, OR USED IN THE FABRICATION OR CONSTRUCTION OF BUILDINGS, STRUCTURES, FOUNDATIONS, OR ANY PORTIONS THEREOF, FOR OTHER THAN THE SPECIFIED PROJECT. © DEVCON CONSTRUCTION, INC.

REVISIONS

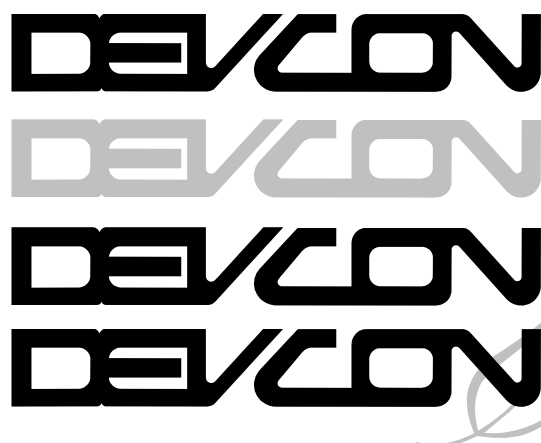
NO.	DATE	DESCRIPTION	BY

PRELIMINARY FIRST FLOOR
PLAN

JOB NO. 67.755	SHEET NO. A2.1 OF SHEETS
DATE: 05/15/17	
DRAWN:E.V.	
CHECKED: GIBA / SLY	
ISSUE: PRELIMINARY	

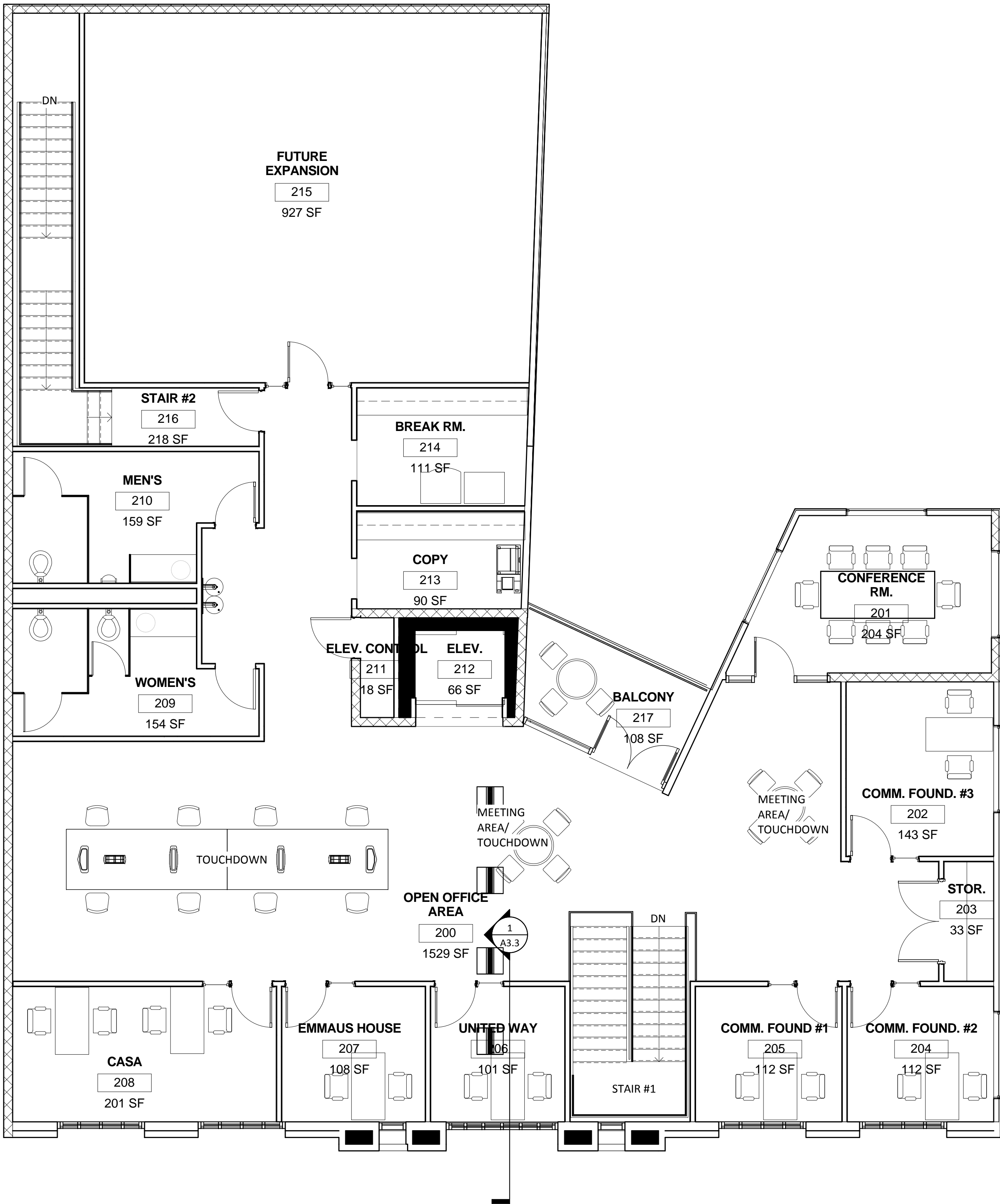
NEW 2-STORY
PHILANTHROPIC
BUILDING

400 BENITO STREET HOLLISTER, CALIFORNIA



CONSTRUCTION
INCORPORATED

690 Gibraltar Drive
Milpitas, California 95035
(408)942-8200 Lic. #399163



1

SECOND FLOOR

3/16" = 1'-0"

4,810 SF



GENERAL NOTES:
CONTRACTOR SHALL FIELD VERIFY ALL JOB CONDITIONS AND DIMENSIONS. VARIATIONS THEREOF FROM THE DRAWINGS MUST BE REPORTED TO THE ARCHITECT. DETAILS INDICATED ON THE DRAWINGS ARE REPRESENTATIVE AND TYPICAL. ALL ATTACHMENTS AND CONNECTIONS SHALL CONFORM TO BEST PRACTICE AND SHALL BE THE CONTRACTOR'S RESPONSIBILITY.

THIS DRAWING EMBODIES IDEAS, DESIGNS, ARRANGEMENTS, PLANS AND SPECIFICATIONS WHICH ARE PROPRIETARY TO DEVCON CONSTRUCTION INC.. AND WHICH WERE DESIGNED, CREATED, EVOLVED AND DEVELOPED FOR USE SOLELY IN CONNECTION WITH THE SPECIFIED PROJECT. NO TRANSFER OF ANY RIGHTS THERE TO IS INTENDED OR EFFECTED BY DELIVERY HEREOF, AND EXCEPT UPON THE WRITTEN PERMISSION OF DEVCON CONSTRUCTION INC.. THE DRAWING IS NOT TO BE DISCLOSED TO OTHERS, REPRODUCED OR COPIED IN WHOLE OR IN PART, OR USED IN THE FABRICATION OR CONSTRUCTION OF BUILDINGS, STRUCTURES, FOUNDATIONS, OR ANY PORTIONS THEREOF, FOR OTHER THAN THE SPECIFIED PROJECT. © DEVCON CONSTRUCTION, INC.

REVISIONS

NO.	DATE	DESCRIPTION	BY

PRELIMINARY SECOND
FLOOR PLAN

JOB NO. 67.755
DATE: 05/15/17
DRAWN:E.V.
CHECKED: GIBA/SLY
ISSUE: PRELIMINARY

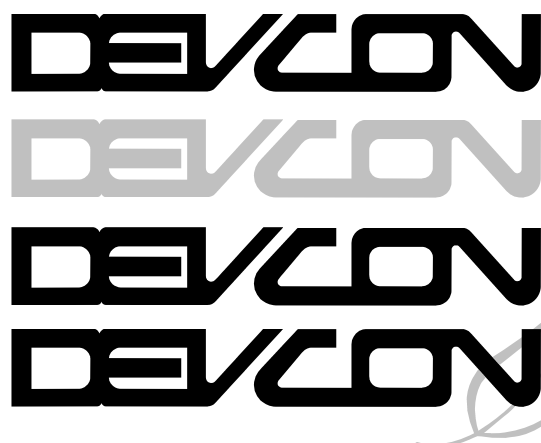
SHEET NO.

A2.2

OF SHEETS

NEW 2-STORY
PHILANTHROPIC
BUILDING

400 BENITO STREET HOLLISTER, CALIFORNIA



CONSTRUCTION
INCORPORATED

690 Gibraltar Drive
Milpitas, California 95035
(408)942-8200 Lic. #399163



1 EAST ELEVATION
1/4" = 1'-0"

GENERAL NOTES:
CONTRACTOR SHALL FIELD VERIFY ALL JOB CONDITIONS AND DIMENSIONS. VARIATIONS THEREOF FROM THE DRAWINGS MUST BE REPORTED TO THE ARCHITECT. DETAILS INDICATED ON THE DRAWINGS ARE REPRESENTATIVE AND TYPICAL. ALL ATTACHMENTS AND CONNECTIONS SHALL CONFORM TO BEST PRACTICE AND SHALL BE THE CONTRACTOR'S RESPONSIBILITY.

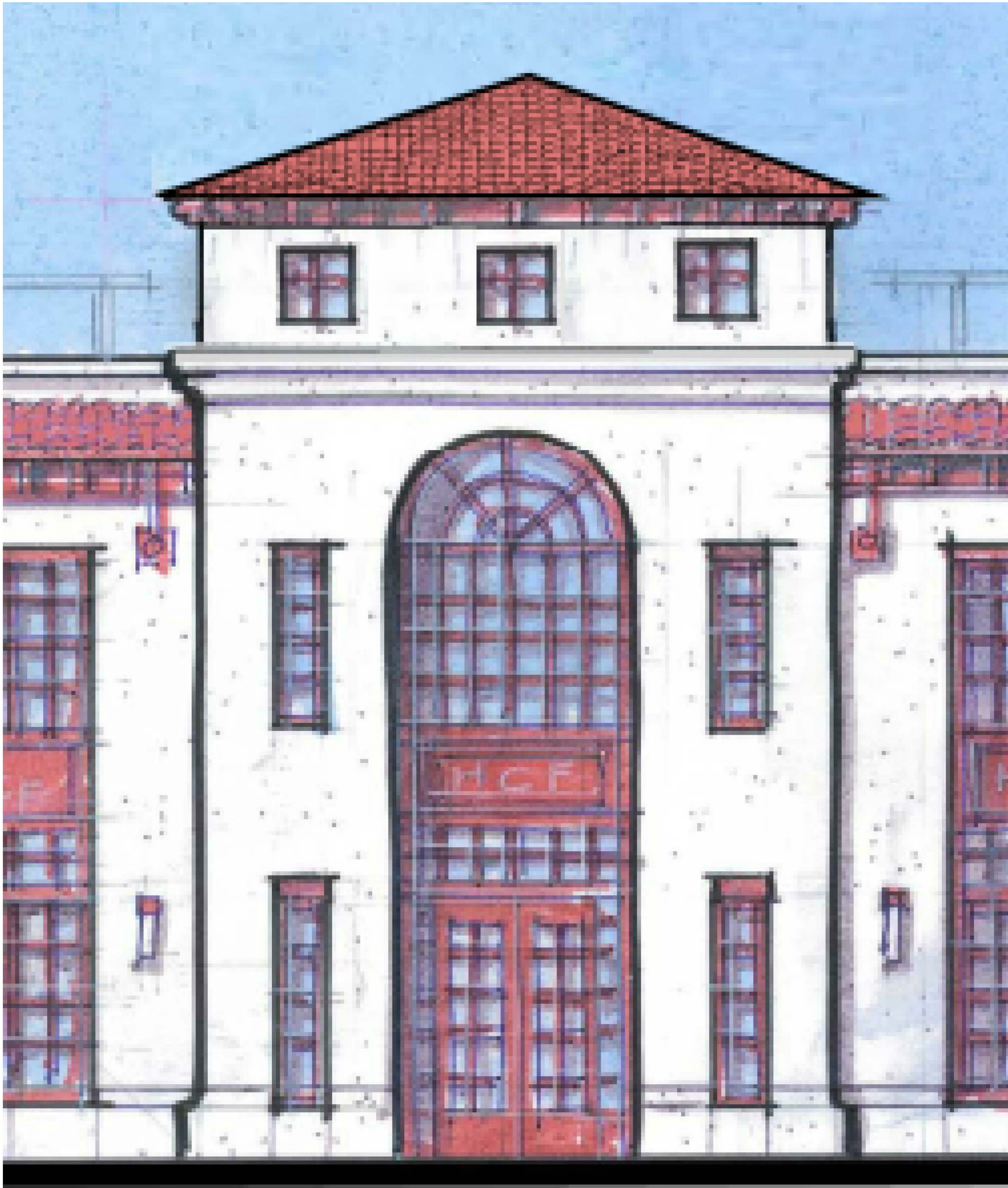
THIS DRAWING EMBODIES IDEAS, DESIGNS, ARRANGEMENTS, PLANS AND SPECIFICATIONS WHICH ARE PROPRIETARY TO DEVCON CONSTRUCTION INC.. AND WHICH WERE DESIGNED, CREATED, EVOLVED AND DEVELOPED FOR USE SOLELY IN CONNECTION WITH THE SPECIFIED PROJECT. NO TRANSFER OF ANY RIGHTS THERETO IS INTENDED OR EFFECTED BY DELIVERY HEREOF, AND EXCEPT UPON THE WRITTEN PERMISSION OF DEVCON CONSTRUCTION INC., THE DRAWING IS NOT TO BE DISCLOSED TO OTHERS, REPRODUCED OR COPIED IN WHOLE OR IN PART, OR USED IN THE FABRICATION OR CONSTRUCTION OF BUILDINGS, STRUCTURES, FOUNDATIONS, OR ANY PORTIONS THEREOF, FOR OTHER THAN THE SPECIFIED PROJECT. © DEVCON CONSTRUCTION, INC.

REVISIONS			
NO.	DATE	DESCRIPTION	BY

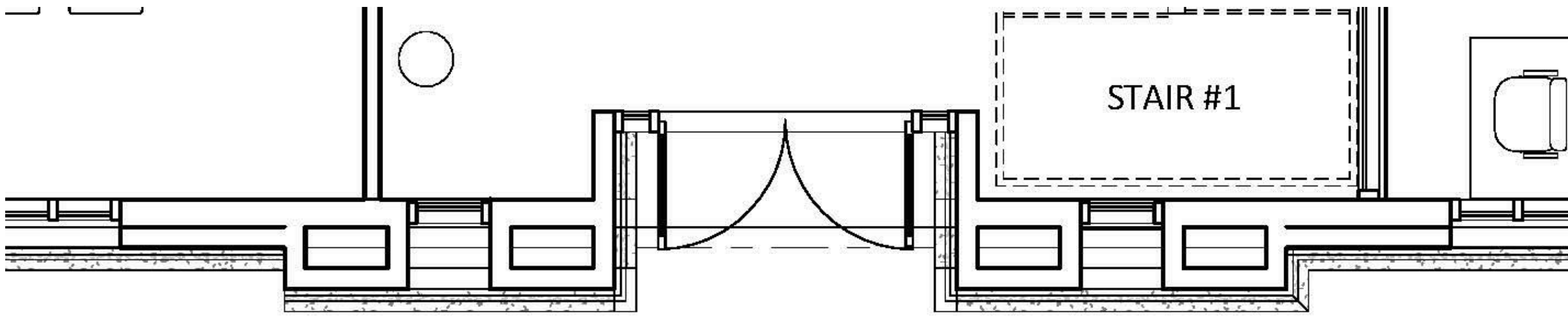
EAST EXTERIOR ELEVATION

JOB NO. 67.755
DATE: 05/15/17
DRAWN:E.V.
CHECKED: GIBA/SLY
ISSUE: PRELIMINARY

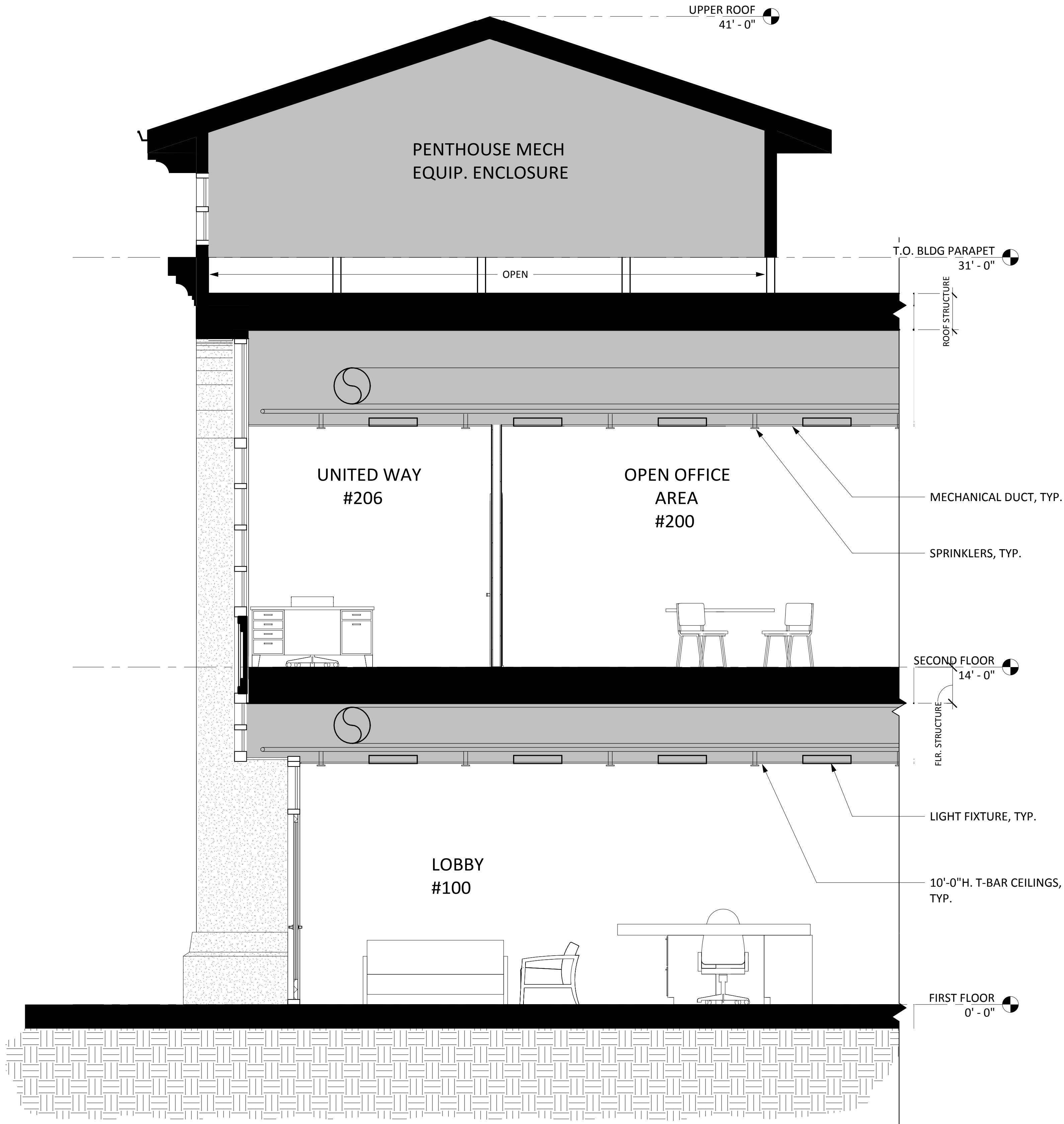
SHEET NO.
A3.1
OF SHEETS



2 PARTIAL BUILDING ENTRY ELEVATION
1/8" = 1'-0"



3 PARTIAL BUILDING ENTRY PLAN
1/8" = 1'-0"



1 SECTION AT ENTRY
3/8" = 1'-0"

NEW 2-STORY
PHILANTHROPIC
BUILDING

400 BENITO STREET HOLLISTER, CALIFORNIA

DEVCON

DEVCON

DEVCON

DEVCON

CONSTRUCTION
INCORPORATED

690 Gibraltar Drive
Milpitas, California 95035
(408)942-8200 Lic. #399163

GENERAL NOTES:
CONTRACTOR SHALL FIELD VERIFY ALL JOB CONDITIONS AND DIMENSIONS. VARIATIONS THEREOF FROM THE DRAWINGS MUST BE REPORTED TO THE ARCHITECT. DETAILS INDICATED ON THE DRAWINGS ARE REPRESENTATIVE AND TYPICAL. ALL ATTACHMENTS AND CONNECTIONS SHALL CONFORM TO BEST PRACTICE AND SHALL BE THE CONTRACTOR'S RESPONSIBILITY.

THIS DRAWING EMBODIES IDEAS, DESIGNS, ARRANGEMENTS, PLANS AND SPECIFICATIONS WHICH ARE PROPRIETARY TO DEVCON CONSTRUCTION INC., AND WHICH WERE DESIGNED, CREATED, EVOLVED AND DEVELOPED FOR USE SOLELY IN CONNECTION WITH THE SPECIFIED PROJECT. NO TRANSFER OF ANY RIGHTS THERE TO IS INTENDED OR EFFECTED BY DELIVERY HEREOF, AND EXCEPT UPON THE WRITTEN PERMISSION OF DEVCON CONSTRUCTION INC., THE DRAWING IS NOT TO BE DISCLOSED TO OTHERS, REPRODUCED OR COPIED IN WHOLE OR IN PART, OR USED IN THE FABRICATION OR CONSTRUCTION OF BUILDINGS, STRUCTURES, FOUNDATIONS, OR ANY PORTIONS THEREOF, FOR OTHER THAN THE SPECIFIED PROJECT. © DEVCON CONSTRUCTION, INC.

REVISIONS			
NO.	DATE	DESCRIPTION	BY

BUILDING ENTRY SECTION,
PARTIAL ELEV. & PLAN

JOB NO. 67.755	SHEET NO. A3.3 OF SHEETS
DATE: 05/15/17	
DRAWN:E.V.	
CHECKED: GIBA/SLY	
ISSUE: PRELIMINARY	